

LEARN HOW TO PLAY GUITAR

Beginners Blues

CHARLES SEDLAK

A decorative flourish consisting of a central diamond shape with symmetrical, ornate scrollwork extending outwards on both sides, positioned below the author's name.

"Shuffle Pattern"

A D E

2 0 2 0 4 0 4 0 2 0 2 0 4 0 4 0

2 0 2 0 4 0 4 0 2 0 2 0 4 0 4 0

2 0 2 0 4 0 4 0 2 0 2 0 4 0 4 0

1 2 3 4

A D A A

5 6 7 8

D D A A

9 10 11 12

E D A E

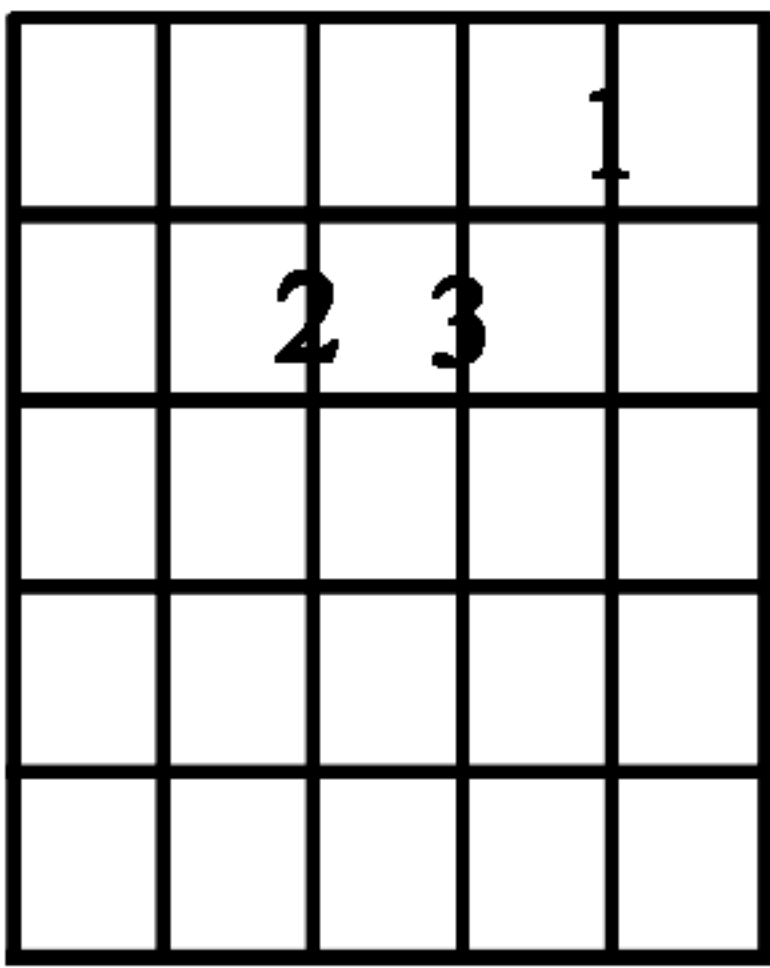
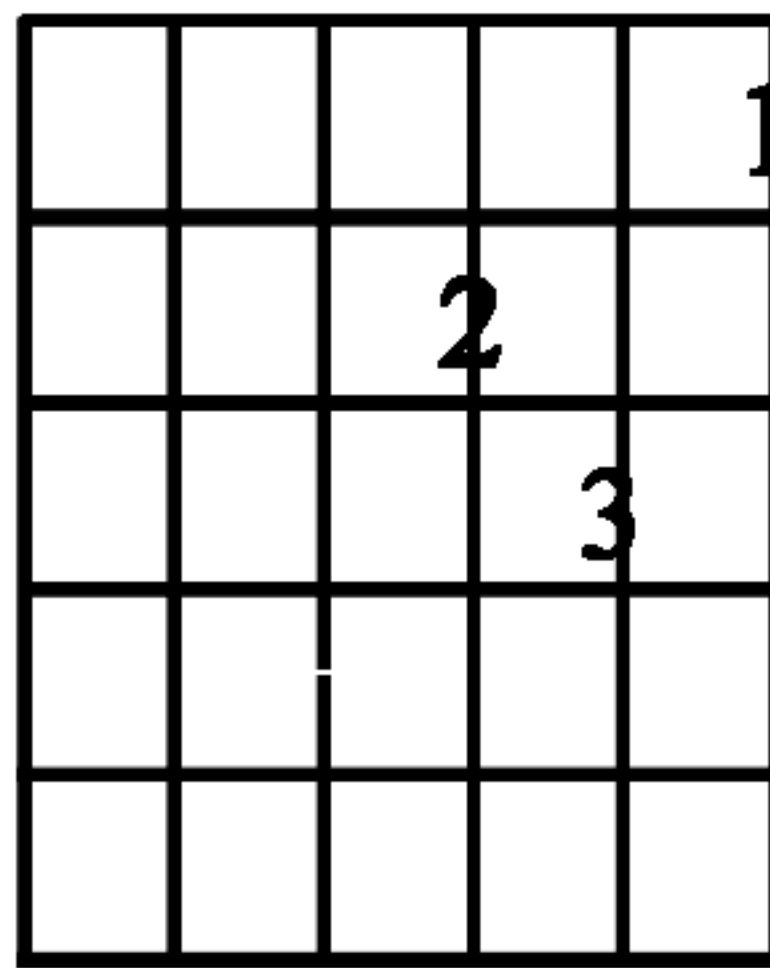
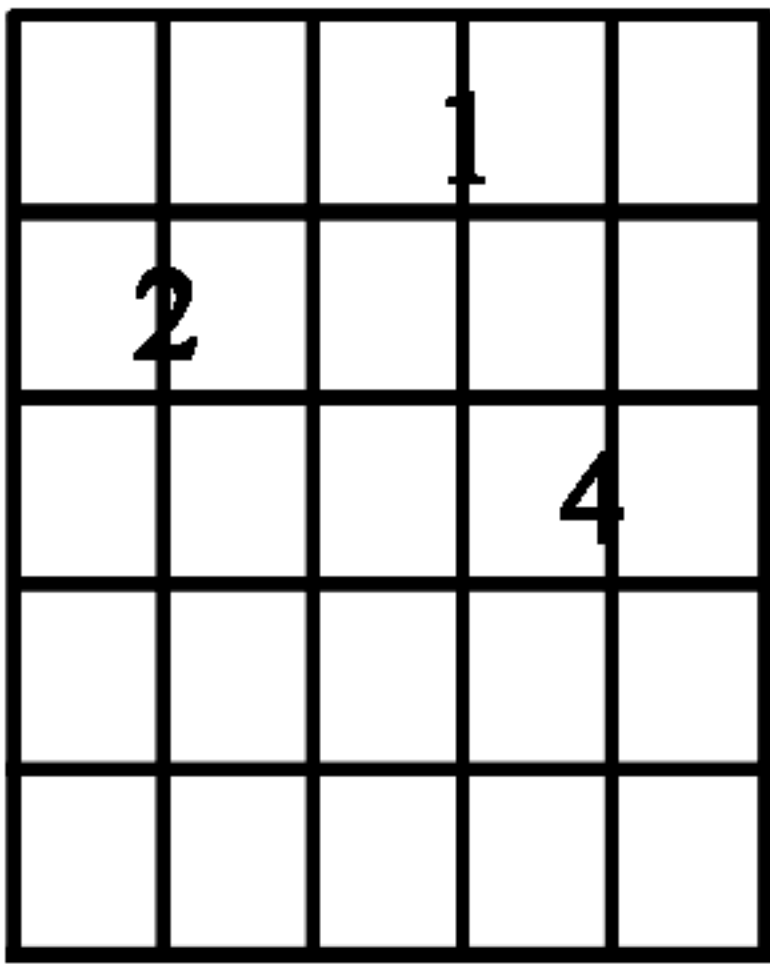
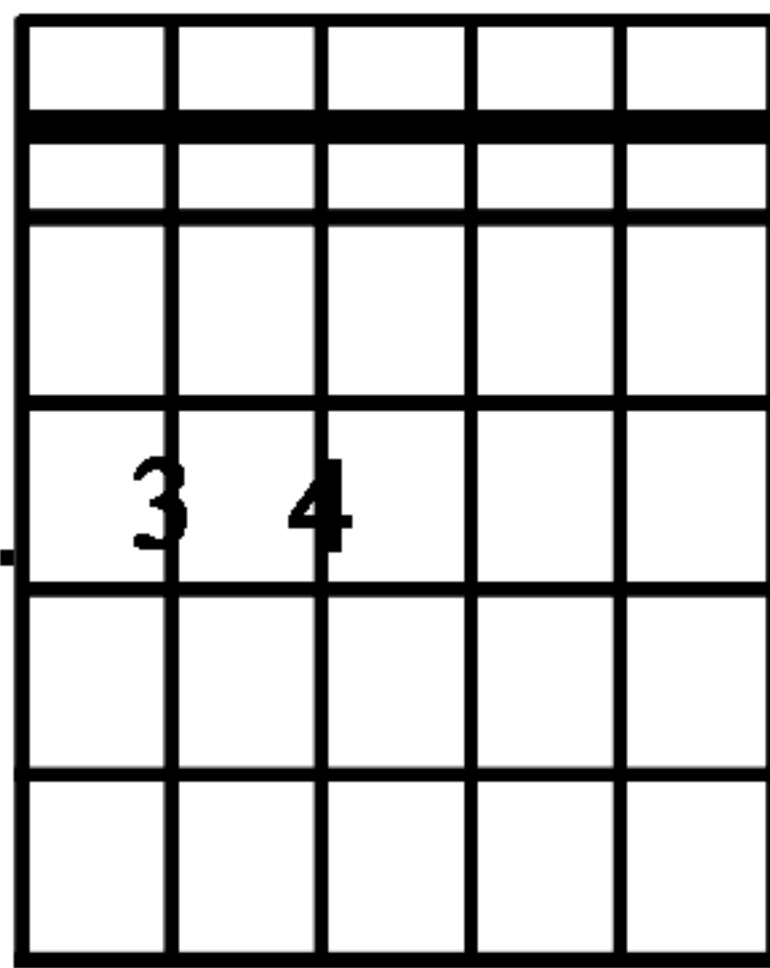
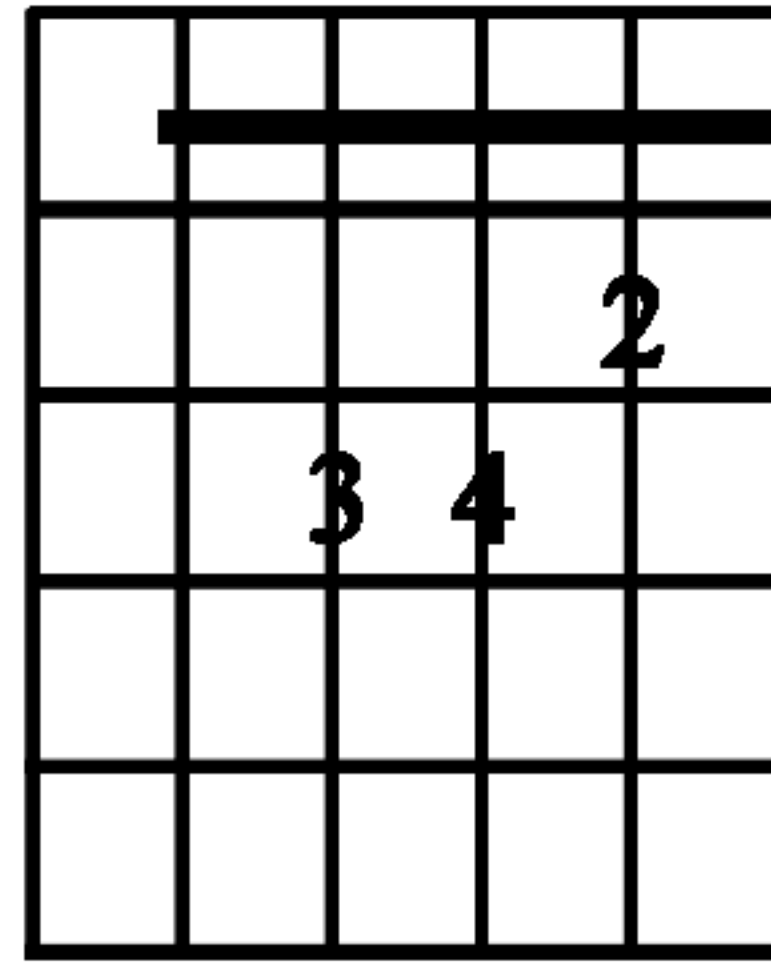
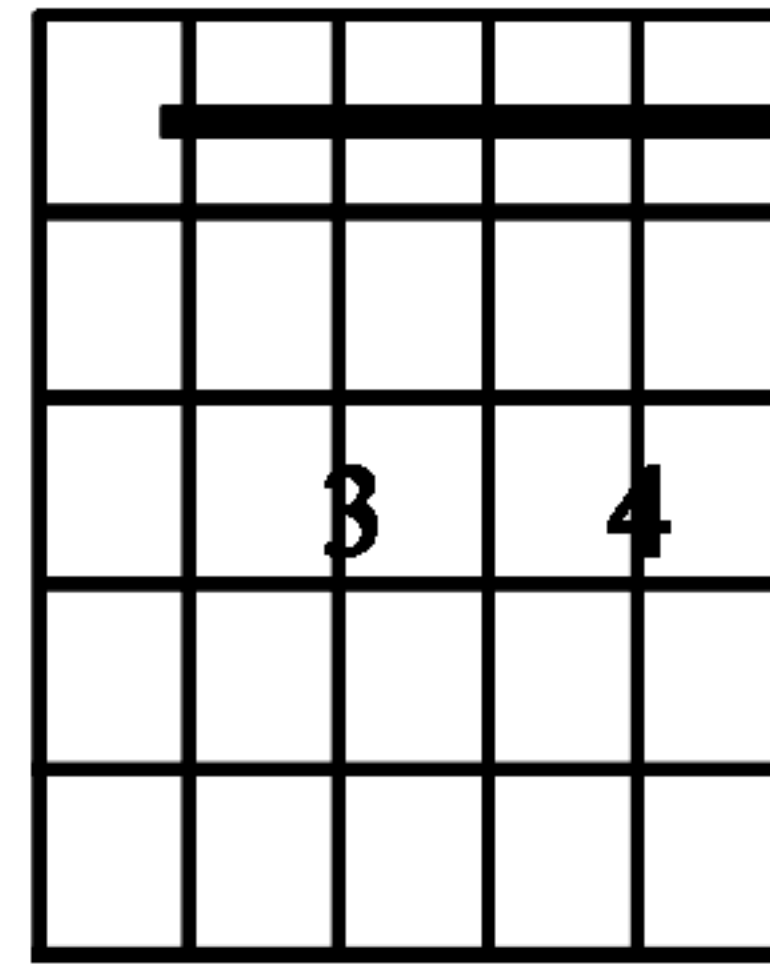
"Moveable Variation"

G C D

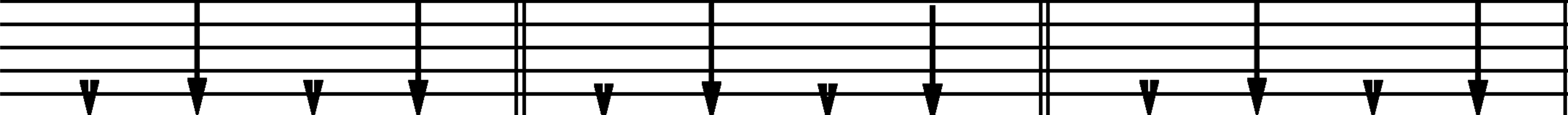
5 3 5 3 7 3 7 3 5 3 5 3 7 3 7 3

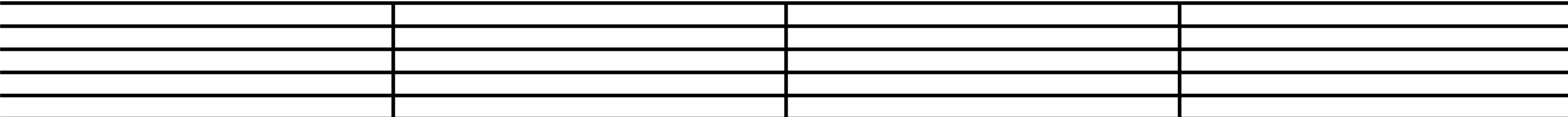
5 3 5 3 7 3 7 3 5 3 5 3 7 3 7 3

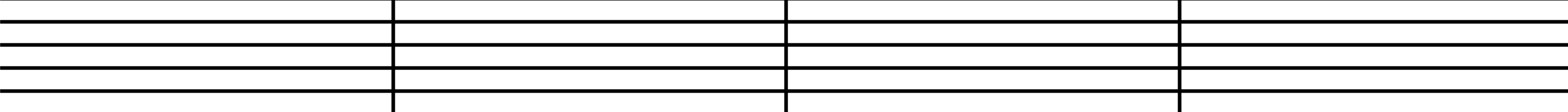
7 5 7 5 9 5 9 5 7 5 7 5 9 5 9 5

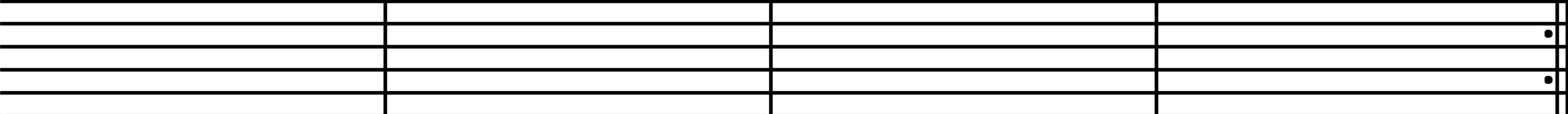
x Am	x x Dm	E7	5 Am	5 ^x Dm	7 ^x E7
					
	Fixed				

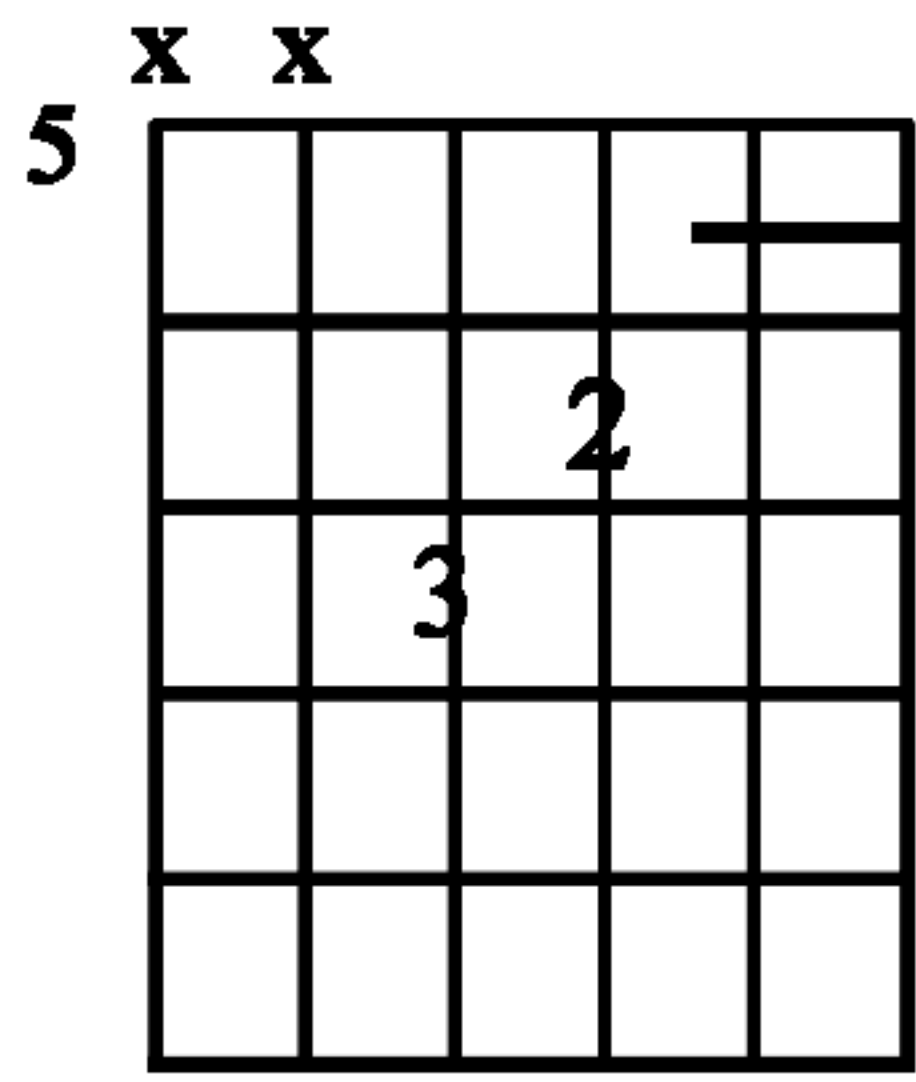
"Minor Blues"

Am	Dm	E7
		

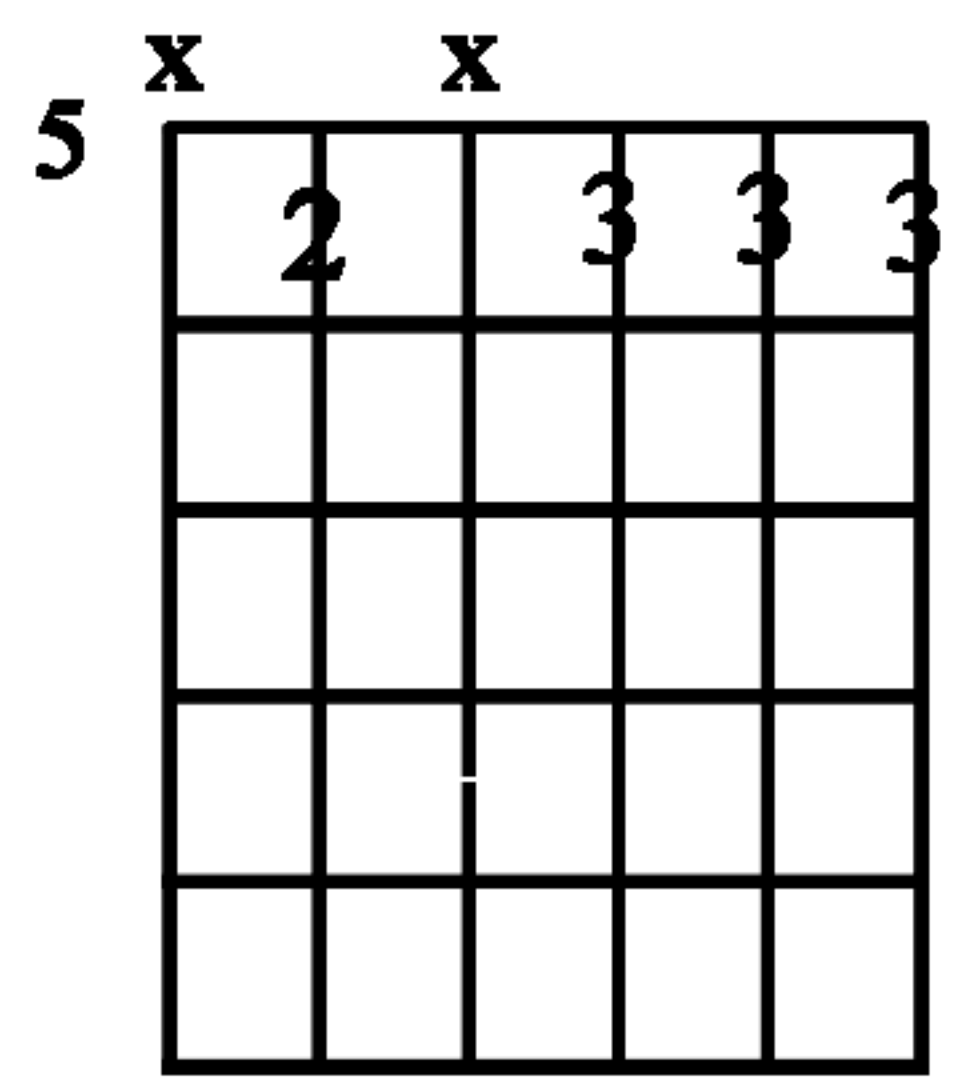
Am	Am	Am	Am
			

Dm	Dm	Am	Am
			

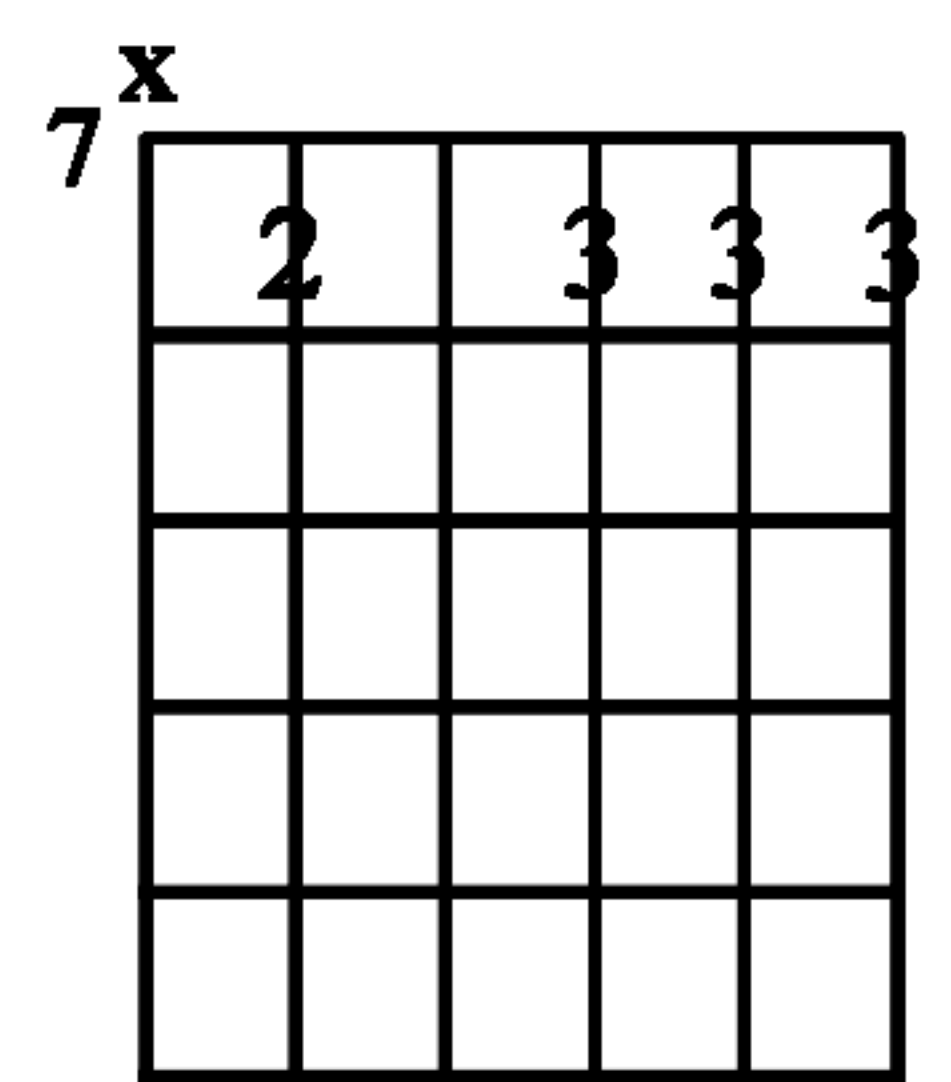
E7	Dm	Am	E7
			



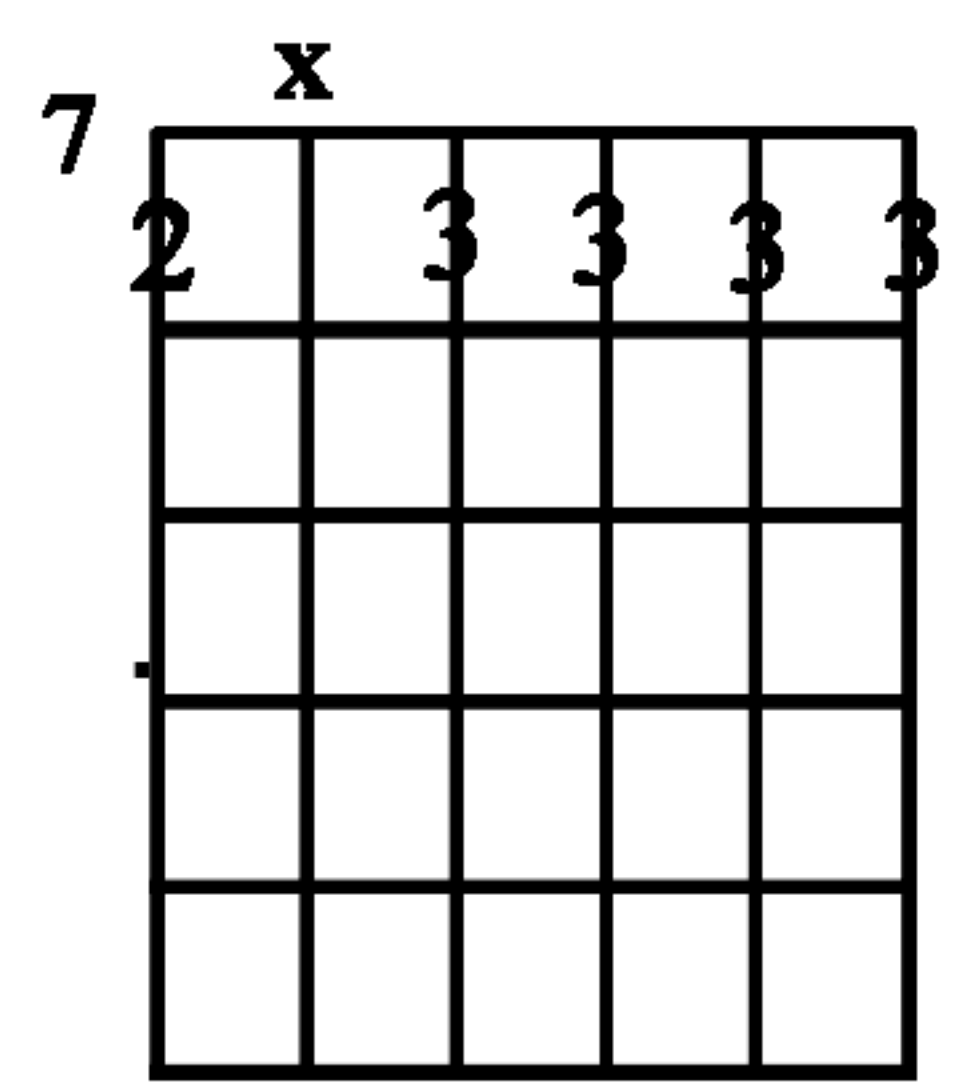
A



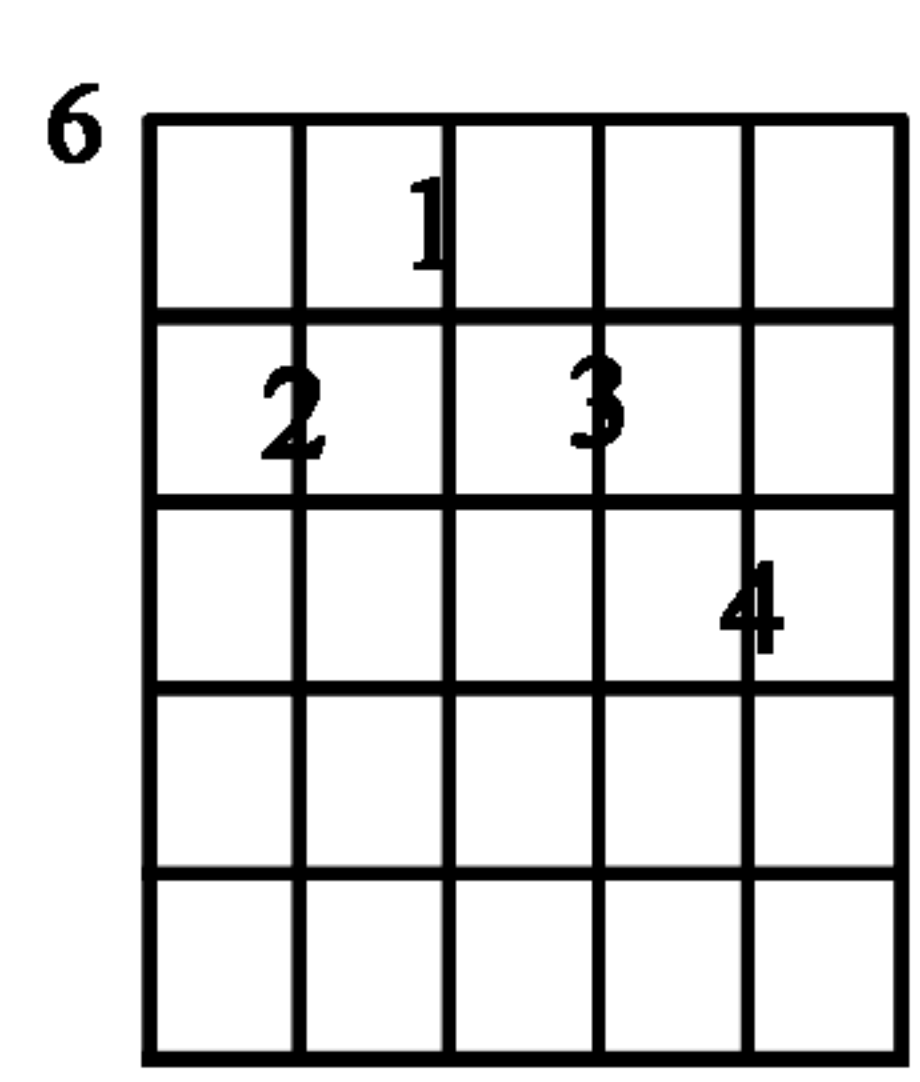
D9



E9



Bm7



E7#9

"Jazz Blues"

A D9 A A D9 D9

A Bm7 C#m7 Cm7 Bm7 Bbm7Am7 A E7#9

"Rumba Blues"

A D E

The first line of guitar tablature consists of three measures. The first measure is labeled 'A' and contains the notes 0, 2, 3, 2, 4, 5 with a slur over the last three notes. The second measure is labeled 'D' and contains the notes 0, 2, 3, 2, 4, 2 with a slur over the last three notes. The third measure is labeled 'E' and contains the notes 0, 2, 3, 2, 4, 2 with a slur over the last three notes. Each measure is separated by a double bar line.

A D A A

The second line of guitar tablature consists of four empty measures, each labeled with a chord name: A, D, A, and A. Each measure is separated by a vertical bar line.

D D A A

The third line of guitar tablature consists of four empty measures, each labeled with a chord name: D, D, A, and A. Each measure is separated by a vertical bar line.

E D A E

The fourth line of guitar tablature consists of four empty measures, each labeled with a chord name: E, D, A, and E. Each measure is separated by a vertical bar line. The final measure ends with a double bar line and two dots on the bottom two strings, indicating the end of the piece.

Walking Bass Line

A

A musical staff with five lines. The notes are: 5 (bottom line), 5 (first space), 4 (second space), 4 (second space), 7 (second space), 7 (second space), 4 (third space), 4 (third space), 5 (third space), 5 (third space), 4 (third space), 4 (third space), 7 (third space), 7 (third space), 4 (third space), 4 (third space).

D

A musical staff with five lines. The notes are: 5 (bottom line), 5 (first space), 4 (second space), 4 (second space), 7 (second space), 7 (second space), 4 (third space), 4 (third space), 5 (third space), 5 (third space), 4 (third space), 4 (third space), 7 (third space), 7 (third space), 4 (third space), 4 (third space).

E

A musical staff with five lines. The notes are: 7 (bottom line), 7 (first space), 6 (first space), 6 (first space), 9 (first space), 9 (first space), 6 (second space), 6 (second space), 7 (second space), 7 (second space), 6 (second space), 6 (second space), 9 (second space), 9 (second space), 6 (second space), 6 (second space).

A

A

D

A

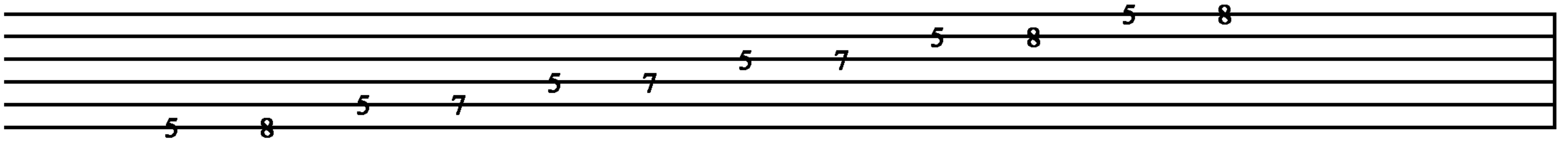
E

A

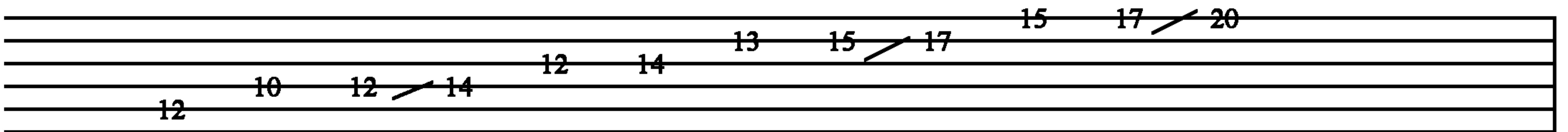
A musical staff with five lines, divided into six measures by vertical bar lines. The measures are labeled with chords: A, A, D, A, E, A. The staff is empty, with only a double bar line at the end.

Pentatonic Minor Scale

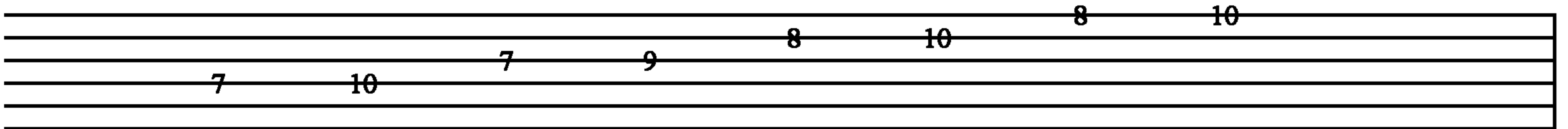
Pattern #1



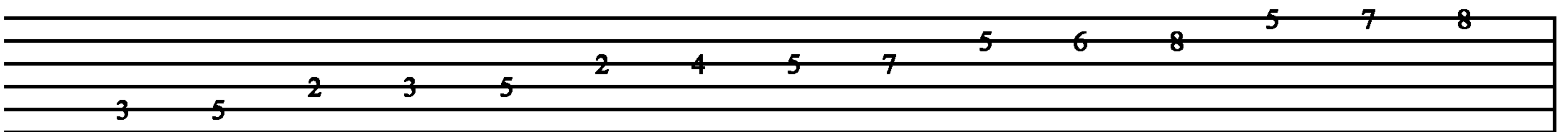
Pattern #2



Pattern #3



C Major Scale



#18

#19

etc.

#20

#21

#22

#23

1 1/2

#24

#25

Repeating Riffs

8 \uparrow 5 8 \uparrow 5 8 \uparrow 5 *etc.* | 8 \uparrow 5 8 5 8 \uparrow 5 8 5 8 \uparrow 5 8 5 *etc.*

This musical notation is written on a single staff. The first measure contains three eighth notes: an 8th fret note with an upward bowing arrow, followed by a 5th fret note, and another 8th fret note with an upward bowing arrow. This sequence is repeated three times, followed by the text "etc.". A double bar line separates this from the second measure, which contains a sequence of eighth notes: 8th fret with upward arrow, 5th fret, 8th fret, 5th fret, 8th fret with upward arrow, 5th fret, 8th fret, 5th fret, 8th fret with upward arrow, 5th fret, 8th fret, 5th fret. This sequence is repeated three times, followed by the text "etc.". The notation is positioned on the top line of the staff.

7 \uparrow 5 8 5 7 \uparrow 5 8 5 7 \uparrow 5 8 5 *etc.* | 7 \uparrow 5 5 7 \uparrow 5 5 *etc.*

This musical notation is written on a single staff. The first measure contains three eighth notes: a 7th fret note with an upward bowing arrow, followed by a 5th fret note, an 8th fret note, a 5th fret note, a 7th fret note with an upward bowing arrow, a 5th fret note, an 8th fret note, a 5th fret note, and a 7th fret note with an upward bowing arrow. This sequence is repeated three times, followed by the text "etc.". A double bar line separates this from the second measure, which contains a sequence of eighth notes: a 7th fret note with an upward bowing arrow, a 5th fret note, a 5th fret note, a 7th fret note with an upward bowing arrow, a 5th fret note, and a 5th fret note. This sequence is repeated three times, followed by the text "etc.". The notation is positioned on the top line of the staff.